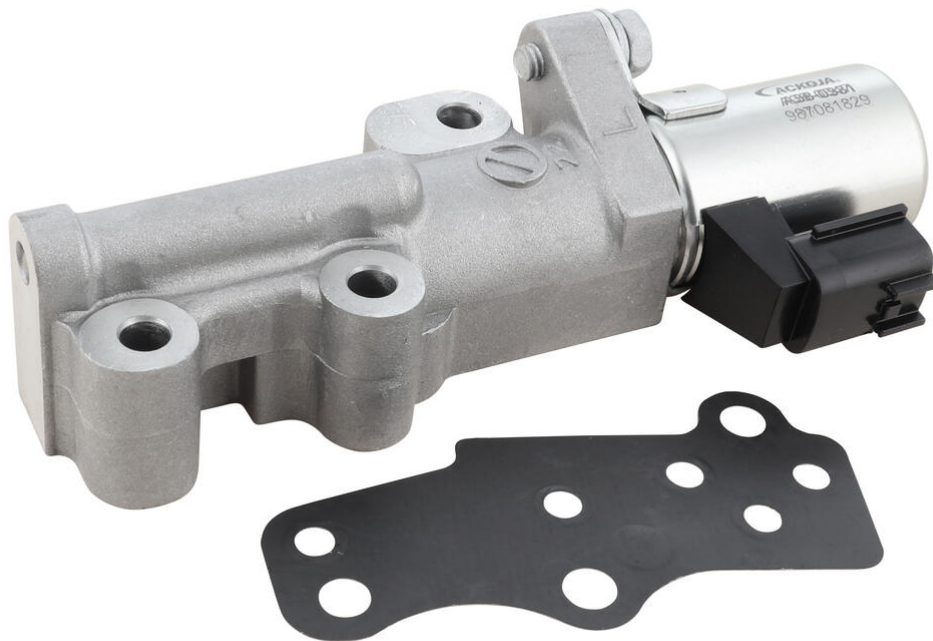


## ACKOJA Control Valve, camshaft adjustment



among other things suitable for	INFINITI G Stufenheck, NISSAN 350Z Coupe (Z33), NISSAN 350Z Roadster (Z33)
Operating Mode	Electric-hydraulic
Supplementary Article/Supplementary Info	with seal
Number of pins	2
Connector Shape	oval

**X-Ref:** 23796-EG22A

**A38-0331**